

DATACOM Ethernet Switches DM1200E Enterprise Family



The ideal solution for Small and Medium Business and Enterprise. High performance and cost effective products for next generation Enterprise applications.

DATACOM

DATACOM line of Ethernet switches consists of six distinct product families: DM4000, DM4100, DM3000, DM2100, DM2300 and DM1200E. Each containing unique features suited for varying applications ranging from simple Small Medium Business (SMB) up to complex Carrier application in Metro Ethernet networks, implementing a complete solution for Core Networks, Edge Networks, End Users and Business Enterprise.

DATACOM offers numerous models of standalone, stackable or modular Ethernet switches for high performance and high density networks that require ports speed from 100Mbps to 10Gbps in either Electrical or Optical configurations with Layer2, Layer3 or MPLS support. DATACOM switches are the ideal products for applications like FTTx, Metro Ethernet and Enterprise Networks.

DM1200E Family

The DM1200E family has four different versions of 1U high, wire speed switches for 19-inch racks with a full range AC power supply and RPU support.

All versions include a complete set of L2 features with static routing support.

The different versions support 24 Gigabit electrical ports and up to four uplinks that can be Gigabit or 10-Gigabit depending on the version. The GP versions support PoE+ in all 24 electrical ports, up to 370W of budget. The stacking ports are shared with two uplink ports allowing up to four units in a true stacking application supporting ring topology for greater protection in case of failures. All versions support Power Redundancy using external RPU.

General features of the DM1200E Ethernet Switches

WIRE SPEED L2 AND L3

- L2 packet Switching and L3 Static Routing implemented at the hardware level.
- Filters and QoS executed at the hardware level without CPU impact.

STATIC ROUTING

- Static routing up to 64 routes and 445 hosts.
- Routing between VLANs.

MANAGEMENT

- Complete IPv4 and IPv6 Management.
- Switch access control with definition of which IP addresses may access the equipment and through which protocols (SNMP, HTTP, Telnet, SSH).
- Easy to use and comprehensive Command Line Interface – CLI, internal Web Server, Telnet interface and SNMP/RMON agent.
- Creation of Access Control Lists (ACLs) in hardware, with multiple comparison and action parameters allowing for the changing, forwarding, discarding or prioritizing of packets without penalizing the equipment CPU.

VLANs

- Up to 1024 simultaneous VLANs using 4093 VIDs, based on the IEEE 802.1Q.
- Dynamic VLAN configuration using the GVRP protocol.
- Voice VLAN Support.
- Private VLAN.

STACKING

- Stacking up to four units.
- True physical stacking.
- Use of a single IP address for the stacking, allowing configuration, management and troubleshooting as a single unit.

PROTECTION MECHANISMS AND LINK AGGREGATION

- Spanning tree protocols, including RSTP and MSTP.
- Up to four spanning tree instances.
- LACP.
- Six LAG groups, up to eight ports per group.

SECURITY

- Encryption for the communication protocols and manager access control rules.
- Syslog, user authentication and accounting RADIUS and TACACS+.
- Alarm notification by e-mail.
- Single clock via SNTP.
- Protection against Denial of Service attacks.
- Port Security, protection mechanisms on L2 and L3 protocols against network attacks and bandwidth limitation for broadcast and multicast traffic and destination lookup failure (DLF).
- IEEE 802.1x VLAN Assignment, Guest VLAN, Dynamic VLAN.

QoS

- Eight queues per port with priority algorithms, eighth queue is shared with stacking control plane in stacking applications, set by either fixed priority, or weight, or minimum rate or a combination of these methods.
- Classification based on IEEE 802.1p standard, IP precedence or DSCP fields, TCP and UDP ports, among others.
- Auto VoIP – Automatic CoS Settings for VoIP.
- Diffserv.

DM1200E Family Models

DM1200E 24GT+4GX

Stackable Layer 2+ Switch with 24 electrical Gigabit Ethernet Ports (10/100/1000Base-T), four Optical 1 Gigabit SFP Ports and two stacking ports (shared with two Optical 1 Gigabit Ports).

DM1200E 24GT+4XS

Stackable Layer 2+ switch with 24 electrical Gigabit Ethernet ports (10/100/1000Base-T), four Optical 1/10 Gigabit SFP+ ports (1000Base-X / 10Gbase-X) and two stacking ports (shared with two Optical 1/10 Gigabit ports).

DM1200E 24GP+4GX

Stackable Layer 2+ Switch with 24 electrical Gigabit Ethernet PoE+ Ports (10/100/1000Base-T), four Optical 1 Gigabit SFP Ports (1000Base-X) and two stacking ports (shared with two Optical 1 Gigabit Ports). PoE+ Power Budget up to 370 Watts.

DM1200E 24GP+4XS

Stackable Layer 2+ Switch with 24 electrical Gigabit Ethernet PoE+ Ports (10/100/1000Base-T), four Optical 1/10 Gigabit SFP+ Ports (1000Base-X / 10Gbase-X) and two stacking ports (shared with two Optical 1/10 Gigabit Ports). PoE+ Power Budget up to 370 Watts.



DM1000E RPU 450

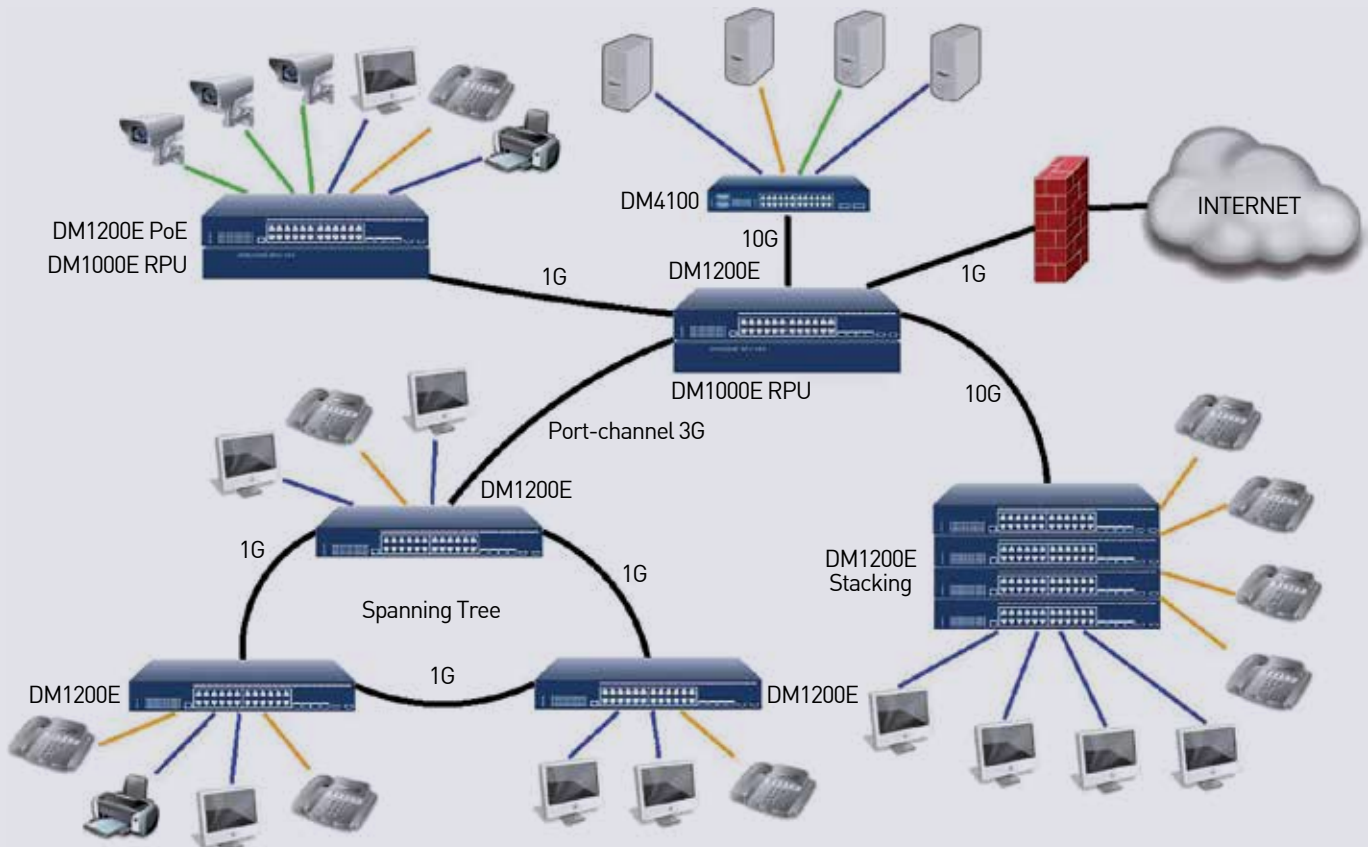
External power supply with input voltage of 100VAC to 240VAC. Provides power redundancy for DM1200E devices.



Applications

SOLUTION FOR ENTERPRISE NETWORK

DM1200E is the perfect solution for Small Medium Business (SMB) and Small Medium Enterprise (SME). With complete L2 features, QoS support, stacking and static routing, it offers easy management support, optimized cost and the features your business needs to keep connected to the market.



DATAKOM

Rua América, 1000 | 92990-000 | Eldorado do Sul | RS | Brazil

+55 51 3933 3000

sales@datacom.ind.br

www.datacom.ind.br